



# PFK-B Polyclonal Antibody

<b>Catalog No</b>	YP-Ab-14906
<b>Isotype</b>	IgG
<b>Reactivity</b>	Human;Mouse;Rat
<b>Applications</b>	WB;IHC;IF;ELISA
<b>Gene Name</b>	PFKL
<b>Protein Name</b>	6-phosphofructokinase liver type
<b>Immunogen</b>	The antiserum was produced against synthesized peptide derived from human K6PL. AA range:691-740
<b>Specificity</b>	PFK-B Polyclonal Antibody detects endogenous levels of PFK-B protein.
<b>Formulation</b>	Liquid in PBS containing 50% glycerol, 0.5% BSA and 0.02% sodium azide.
<b>Source</b>	Polyclonal, Rabbit,IgG
<b>Purification</b>	The antibody was affinity-purified from rabbit antiserum by affinity-chromatography using epitope-specific immunogen.
<b>Dilution</b>	WB: 1/500 - 1/2000. IHC: 1/100 - 1/300. ELISA: 1/20000.. IF 1:50-200
<b>Concentration</b>	1 mg/ml
<b>Purity</b>	≥90%
<b>Storage Stability</b>	-20°C/1 year
<b>Synonyms</b>	PFKL; 6-phosphofructokinase; liver type; Phosphofructo-1-kinase isozyme B; PFK-B; Phosphofructokinase 1; Phosphohexokinase
<b>Observed Band</b>	85kD
<b>Cell Pathway</b>	Cytoplasm .
<b>Tissue Specificity</b>	Brain,Cervix,Colon,Human amygdala,Human retina,Kidney,Liver,Lung,Muscle,Pla
<b>Function</b>	catalytic activity:ATP + D-fructose 6-phosphate = ADP + D-fructose 1,6-bisphosphate.,cofactor:Magnesium.,enzyme regulation:Allosteric enzyme activated by ADP, AMP, or fructose bisphosphate and inhibited by ATP or citrate.,miscellaneous:In human PFK exists as a system of 3 types of subunits, PFKM (muscle), PFKL (liver) and PFKP (platelet) isoenzymes.,pathway:Carbohydrate degradation; glycolysis; D-glyceraldehyde 3-phosphate and glycerone phosphate from D-glucose: step 3/4.,similarity:Belongs to the phosphofructokinase family. Two domains subfamily.,subunit:Tetramer. Muscle is M4, liver is L4, and red cell is M3L, M2L2, or ML3.,
<b>Background</b>	This gene encodes the liver (L) subunit of an enzyme that catalyzes the conversion of D-fructose 6-phosphate to D-fructose 1,6-bisphosphate, which is a key step in glucose metabolism (glycolysis). This enzyme is a tetramer that may



be composed of different subunits encoded by distinct genes in different tissues. Alternative splicing results in multiple transcript variants. [provided by RefSeq, Mar 2014],

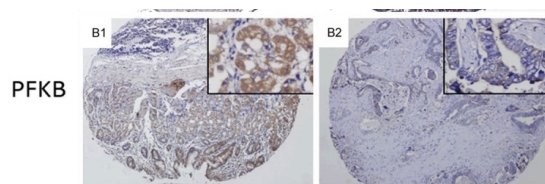
**matters needing attention**

Avoid repeated freezing and thawing!

**Usage suggestions**

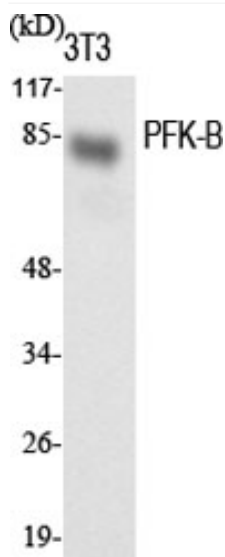
This product can be used in immunological reaction related experiments. For more information, please consult technical personnel.

**Products Images**



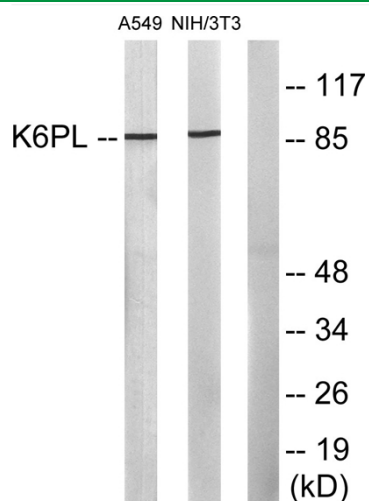
Gao, Yunshu, et al. "Overexpression of metabolic markers HK1 and PKM2 contributes to lymphatic metastasis and adverse prognosis in Chinese gastric cancer." International journal of clinical and experimental pathology 8.8 (2015): 9264.

Western Blot analysis of various cells using PFK-B Polyclonal Antibody diluted at 1:1000

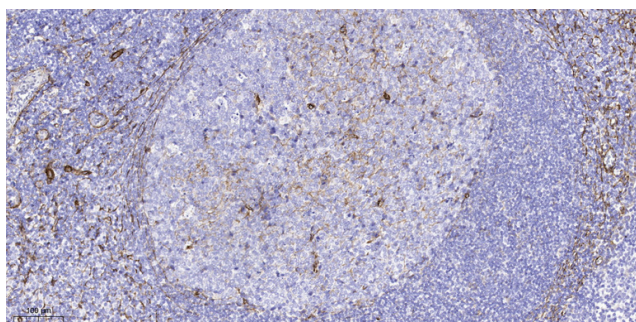


Western Blot analysis of NIH-3T3 cells using PFK-B Polyclonal Antibody diluted at 1:1000





Western blot analysis of lysates from A549 and NIH/3T3 cells, using K6PL Antibody. The lane on the right is blocked with the synthesized peptide.



Immunohistochemical analysis of paraffin-embedded human tonsil. 1, Tris-EDTA, pH 9.0 was used for antigen retrieval. 2 Antibody was diluted at 1:200 (4° overnight). 3, Secondary antibody was diluted at 1:200 (room temperature, 45 min).